

**DUKE FOUNDERS CENTENNIAL CONCERT
A-Z EVENT GUIDE**

Last Updated: September 23, 2024

ACCESSIBILITY ACCOMMODATIONS AND INFORMATION

Please review the [Duke Athletics Accessibility Guide for Brooks Field at Wallace Wade Stadium](#) on the [Accessibility Services page](#). Prior to the concert, please reach out to Duke Access & Accommodation Services at 919-668-1267 if you have specific requests, questions or concerns regarding our accessibility and accommodations and to help make arrangements for your visit.

- **Duke Access and Accommodations Services Tent** – Duke Access and Accommodation Services will have a designated location set up during the Centennial Concert for any guests who need to get help from them. This location will be at the Bostock Gate behind section 16 of the stadium.
- **“DUACCESS” Assistance Text Messaging Service** – Text 919-808-5576 with “DUACCESS”, request and location. *This is a text messaging only service – Standard messaging and data rates may apply.* Services cannot be reserved or guaranteed for a specific time. All requests will be processed and dispatched as quickly as possible and can take 15 minutes or more depending on request volume.
- **Accessible Parking – ADA Parking Placard or License Plate REQUIRED** – is available in the Grounds Lot and in the Card Lot. In the event of overflow, accessible parking will be directed to Science Drive Garage off of NC 751/Cameron Blvd. Guests with questions about accessible parking should contact the Duke Access & Accommodation Services at 919-668-1267.
- **Accessible Lift-Equipped Van Assistance** – is staged in the Card Lot. To request an accessible van in any other parking lots, speak to the parking lot attendant or use DUACCESS Assistance Text Messaging.
- **Accessible Ticket Exchange** - All seats are distributed on a first come, first served basis. If you require accessible seats, please contact the Ticketing Office [NUMBER/EMAIL/ETC]. If you require any other accommodations (other than accessible seats) in order to attend and enjoy this event, please contact Duke Access and Accommodation Services (DAAS@duke.edu, 919-668-1267). For the day of event ticket exchange, please notify an event staff member, go to the Bostock Gate Ticket Booth, or go to the Duke Access and Accommodation Services tent to get assistance in exchanging your ticket for an accessible seating ticket.
- **Wheelchair Assistance** – is available through Duke Guest Services from the ADA parking lots to seating locations. To request wheelchair assistance, speak to the nearest event staff or use DUACCESS Assistance Text Messaging. Wheelchairs are only an ingress/egress program. Guests may not utilize the wheelchair the entire event.
- **Entry Screening Accommodations** – are available at the designated Medical/Family Lane at each entrance. Guests with medical devices should consult their doctor or device manufacturer if unsure of their ability to use a walkthrough metal detector or a screening wand. Guests should notify event staff that they have a medical device and will be assisted through the screening process.
- **Accessible Seating** – is available throughout the stadium and Blue Devil Tower. All accessible seating areas are assigned, ticketed seating areas. ADA Ticket Fraud includes, but is not limited to, the misrepresentation of a disability. Duke University will take appropriate action regarding misrepresentation, which may result in relocation, revocation of tickets or removal from the stadium.

- **Elevators** – Elevator access for field level accessible seating is available on the concourse behind Section 32. In Blue Devil Tower, Club and Suite Level guests may use elevators #2, #3, #4 for stadium concourse and floor access.
- **Accessible Restrooms** – are available throughout the stadium and in parking lots. Gender-neutral accessible family restrooms are located behind Section 9, Section 18, Section 26 and on field level. An adult changing table is available in the gender-neutral accessible family restroom behind Section 18.
- **Assistive Listening Devices** – are available upon request at the Duke Access and Accommodations booth behind Section 16 and the Club Level Guest Services Desk in Blue Devil Tower.
- **Interpreter** - American Sign Language interpreters are scheduled to provide interpretation during the event. They will be on the left side of the stage at the bottom of section 25. For questions about getting seated closer to the interpreters, please see the accessible seating information above
- **Service Animals** – Duke University welcomes trained Service Animals to Brooks Field at Wallace Wade Stadium. A Service Animal is a dog that is individually trained to do work or perform tasks for the benefit of an individual with a disability, including a physical, sensory, psychiatric, intellectual or other mental disability. A Service Animal must be under the control of the handler at all times. A Service Animal must be leashed or tethered unless doing so would interfere with the task that it was trained to perform for the individual with a disability. A Service Animal must not show aggression toward people or other animals. A Service Animal does not bark, growl or whine unless trained to do so as a warning sign to the handler. A Service Animal does not solicit food or other items from the general public. A Service Animal's work does not disrupt the normal course of business. Service Animals should wear current rabies vaccination tags at all times or provide proof of vaccination upon request. If a Service Animal is found in violation of these guidelines, the Service Animal will be excluded from the facility.
- **Service Animals in Training** - In North Carolina, Service Animals in Training have the same access rights as people with disabilities using a Service Animal. The Service Animal in Training must wear a collar and leash, harness or cape that identifies it as a Service Animal in Training. Service Animals in Training should wear current rabies vaccination tags at all times or provide proof of vaccination upon request. The trainer is liable for any damage caused by the animal while on Duke University property. Service Animals in Training must be under the control of the handler at all times, must be housebroken and must follow all behavior guidelines established for fully trained Service Animals. If the Service Animal in Training is found in violation of these guidelines, the Service Animal in Training will be excluded from the facility.
- **Emotional Support Animals** - Therapy dogs, emotional support dogs and companion dogs are not Service Animals as defined by the ADA and are not permitted at Brooks Field at Wallace Wade Stadium.
- **Sensory Inclusive Accommodations** – Sensory bags with noise-canceling headphones, fidget tools and verbal cue cards are available upon request at the Duke Access and Accommodations booth behind section 16 and Club Level Guest Services Desk in Blue Devil Tower. Sensory Bags must be returned prior to departure. Quiet areas are located behind Section 9, behind Blue Devil Tower near Section 30 and at the bottom of the elevator near Section 32 on field level.
- **Lighting Effects** – will be used for the concert. Guests can see stadium medical staff at the Bostock Gate First Aid Station for more information.
- **Emergency or Severe Weather Evacuation** – Event staff will be available to direct and assist guests with disabilities who request assistance in exiting the stadium or seeking safe shelter. All stadium exits are accessible. All emergency and severe weather PA announcements are accompanied by visual messaging on the stadium video board and Blue Devil Tower televisions.

ALCOHOL

Guests 21 years of age and older can purchase beer, seltzer and hard cider at concessions locations throughout the concourse. Alcohol sales end 30 minutes prior to the show's conclusion. Duke reserves the right to cut off alcohol at any time at their sole discretion.

Alcohol policies will be strictly enforced:

- Alcoholic beverages are not permitted to be brought into or carried out of stadium gates, Devils Deck or Blue Devil Tower.
- All guests consuming alcoholic beverages will be required to show ID regardless of age at the point of sale and must be prepared to show proper ID to event staff anywhere inside the venue. If proper ID cannot be shown, the guest will be referred to Duke University Police.
- Two (2) drinks maximum per identification per transaction.
- Guests may be refused purchase at the discretion of event staff.
- Underage drinking is prohibited.
 - Guests under the age of 21 found in possession of alcohol will be addressed by Duke University Police, ejected from the event and potentially face further actions. Individuals who are seen supplying alcohol to underage guests will be addressed by event staff and Duke University Police, ejected from the event and potentially face further sanction.
 - Duke University students enrolled or on leave, who violate stadium alcohol policies will be addressed by event staff and Duke University Police, ejected from the event and referred to the Office of Student Conduct & Community Standards for disciplinary action.
- No refunds will be provided for confiscated beverages.

ASSISTANCE TEXT MESSAGING

For assistance on-campus, in parking lots or the stadium, **text stadium operations at 919-808-5576** with issue and location. *This is a text messaging only service – Standard messaging and data rates may apply.*

ATM

Brooks Field at Wallace Wade Stadium is a **cashless venue** – credit/debit cards and mobile pay apps only. A Duke Federal Credit Union ATM is located outside the Bostock Gate just outside the Johnson Family Team Store. Guests who need access to the ATM should go to the Bostock Gate for assistance.

BAG POLICY

All bags and purses must be clear plastic, vinyl or PVC and no larger than 12" x 12" x 6" – including bags for medical and/or childcare needs. Small clutches/wallets (with or without a strap) that fit in the palm of the hand (no larger than 8" x 5" x 1") and one (1)-gallon clear plastic storage bags are also permitted.

Bags/items are not permitted to be left unattended outside of Brooks Field at Wallace Wade Stadium. Unattended items found outside the stadium will be disposed of or dealt with in a manner deemed appropriate by stadium officials. Duke University and Duke Athletics are not responsible for loss of any unattended items.



BANNER/SIGNAGE POLICY

Banners and signs are permitted inside Brooks Field at Wallace Wade Stadium. Duke University reserves the right to prohibit or remove any a banner or sign that obstructs the view of other fans, obscures stadium signage, can be considered an advertisement, political statement or is determined to be obscene, vulgar, indecent, inappropriate or derogatory.

CAMERA POLICY

Hand-held still cameras are permitted for personal use only. Cameras with a lens longer than four (4) inches, video cameras and bags/cases larger than 8" x 5" x 1" are not permitted in Brooks Field at Wallace Wade Stadium.

CONCESSIONS

Concessions stands operated by Proof of the Pudding serve a variety of food and Coca-Cola products throughout the Brooks Field at Wallace Wade Stadium concourse. There are no concessions stands on field level. **All concessions stands are cashless** - credit/debit card and mobile pay apps only. Flex account payment is available for Duke students with DukeCard in-hand (mobile DukeCard payment not currently available).

CONDUCT

Duke University expects all guests to always conduct themselves in an appropriate manner before, during and after the concert. We expect all guests to treat other guests, staff, and performers/participants with respect.

Please join us in creating a fun, safe, family atmosphere at Brooks Field at Wallace Wade Stadium by refraining from the following behaviors:

- Interfering with other guests' ability to enjoy the concert
- Using/displaying foul or abusive language or gestures
- Standing, sitting or otherwise obstructing stadium aisles
- Appearing to be impaired or in a diminished capacity
- Verbal or physical harassment of guests or stadium staff
- Failing to produce a ticket upon request or sitting in a seat that does not match your ticket
- Entering the playing field or restricted access areas
- Throwing objects onto the field or within the stadium
- Otherwise being disorderly, unruly or disruptive

If help is needed with guests who are acting inappropriately,

- Contact the nearest event staff member or police officer
- Text our Guest Assistance Service at 919-808-5576 – message & data rates may apply
- Call the Game Day Operations Center at 919-668-5777

Violators are subject to relocation, ejection and possible arrest. Duke University Students are subject to referred to the Office of Student Conduct & Community Standards for disciplinary action.

DRONES

Drones and other unmanned aircraft systems (UAS) are not permitted on the Duke University campus, including in/around Brooks Field at Wallace Wade Stadium. Violators may be subject to trespass.

ELEVATORS

Elevator access for field level accessible seating is available on the concourse behind Section 32. In Blue Devil Tower, Club and Suite Level guests may use elevators #2, #3, #4 for stadium concourse and floor access.

EMERGENCY & EVACUATION PREPAREDNESS

In the event of an emergency or evacuation from Brooks Field at Wallace Wade Stadium, please follow the directions of the PA announcer, event staff and emergency responders.

- Always designate a pre-determined location both inside and outside the stadium to meet friends and family in case the group is separated.
- Locate the nearest exit and an alternate exit to your seat location:
 - Wilson Gate – east entry behind Section 4
 - East Concourse Exit Only Gates – behind Sections 9, 10
 - North Concourse Exit Only Gate – behind Section 14
 - Bostock Gate – north entry behind Section 16
 - Northwest Gate – behind Section 22
 - Powers Gate – west entry behind Section 26
- See Something, Say Something – If you see or become aware of any activity that is unusual, suspicious or causes concern, report the activity:
 - Contact the nearest event staff member or police officer
 - Text our Guest Assistance Service at 919-808-5576 – message & data rates may apply
 - Call the Operations Center at 919-668-5777
- Monitor the weather – take precautions for severe heat or severe weather before, during or after the concert. In the event of severe weather during the concert, please be prepared to evacuate Brooks Field at Wallace Wade Stadium and return to your vehicle.
- If an emergency or severe weather evacuation arises, event staff will be available to direct guests and assist guests with disabilities who request assistance in exiting the stadium or seeking safe shelter. All stadium exits are accessible. All emergency or severe weather PA announcements are accompanied by visual messaging on the stadium video board and Blue Devil Tower televisions.

EMERGENCY MEDICAL ASSISTANCE/FIRST AID

First aid stations are located:

- Behind Section 19 – Bostock Gate
- Behind Section 28 – west concourse
- Field Level – next to video board
- Blue Devil Tower Club Level
- Blue Devil Tower Suite Level

In case of emergency, please contact the nearest event staff for assistance or call Duke Police at 919-684-2444 or Durham Police at 9-1-1.

EMOTIONAL SUPPORT ANIMALS

Therapy dogs, emotional support dogs and companion dogs are not Service Animals as defined by the ADA and are not permitted at Brooks Field at Wallace Wade Stadium.

ENTRY AND SCREENING POLICY

Stadium gates and Blue Devil Tower open 90 minutes prior to show time –

All persons – staff, ticketed guests and Duke University students – are subject to screening before entering Brooks Field at Wallace Wade Stadium. Walk-through metal detectors will be the primary means of screening. For guests who are unable to utilize a walk-through metal detector, hand-held metal detectors will be used with physical pat-downs as a final alternative option. Any person who does not consent to screening will not be allowed into the stadium. Screening areas are located outside all entrances and designated medical/family lanes are available for guests who require screening accommodations.

Guests with Teal and Orange tickets are ONLY permitted to enter the stadium through the Bostock Gate and the Wilson Gate. Guests with Purple and Pink tickets are allowed entry through all entrances into the stadium (Powers Gate, Bostock Gate, and Wilson Gate). Guests with Gray and Blue tickets are allowed entry through Finch-Yeager Bridge.

For more information visit the **Clear Bag Policy & Entry Screening page** linked above.

FAMILY INFORMATION

Please find below a brief outline of family services and helpful information for the concert at Brooks Field at Wallace Wade Stadium.

- **Entry Screening** – Each guest, including children, are subject to screening prior to entry. Infants and toddlers may be carried through walk-through metal detectors. Children who are able to walk through on their own should do so. If the walk-through metal detector alerts event staff for items on a child, secondary screening will occur in the presence of a parent/guardian.
- **Family Restrooms & Changing Tables** – All stadium restrooms are equipped with changing tables. Gender-neutral accessible family restrooms are located behind Section 9, behind Section 18, behind Section 26, on field level and on each floor of Blue Devil Tower.
- **Lactation Room** – is available behind Section 18 next to the Bostock Gate Guest Services Desk. In Blue Devil Tower, mothers requesting accommodations should visit the Club Level or Suite Level Guest Services Desk.
- **Strollers** – are permitted inside Brooks Field at Wallace Wade Stadium. There is no stroller check inside the stadium. Guests may park strollers behind the stadium wall at the top of their seating section at their own risk. Duke University assumes no responsibility for loss of any items left in unattended strollers.

FOOD AND BEVERAGE

Outside food and beverage are prohibited. (Exceptions: Medical & childcare reasons)

LIGHTING EFFECTS

Lighting effects may be used for the concert. Guests suffering from epilepsy or other visual light stimulation effects are advised to see stadium medical staff at the Bostock Gate First Aid Station behind Section 19 upon entering the stadium for more information.

LOST PERSON

Any guest reporting or inquiring about a lost person should contact the nearest police officer or event staff member. If a police officer or event staff member locates a lost person, every effort will be made to return them to their party at their seating location. A lost person will be accompanied by a police officer or staff member until reunited with their party.

MERCHANDISE

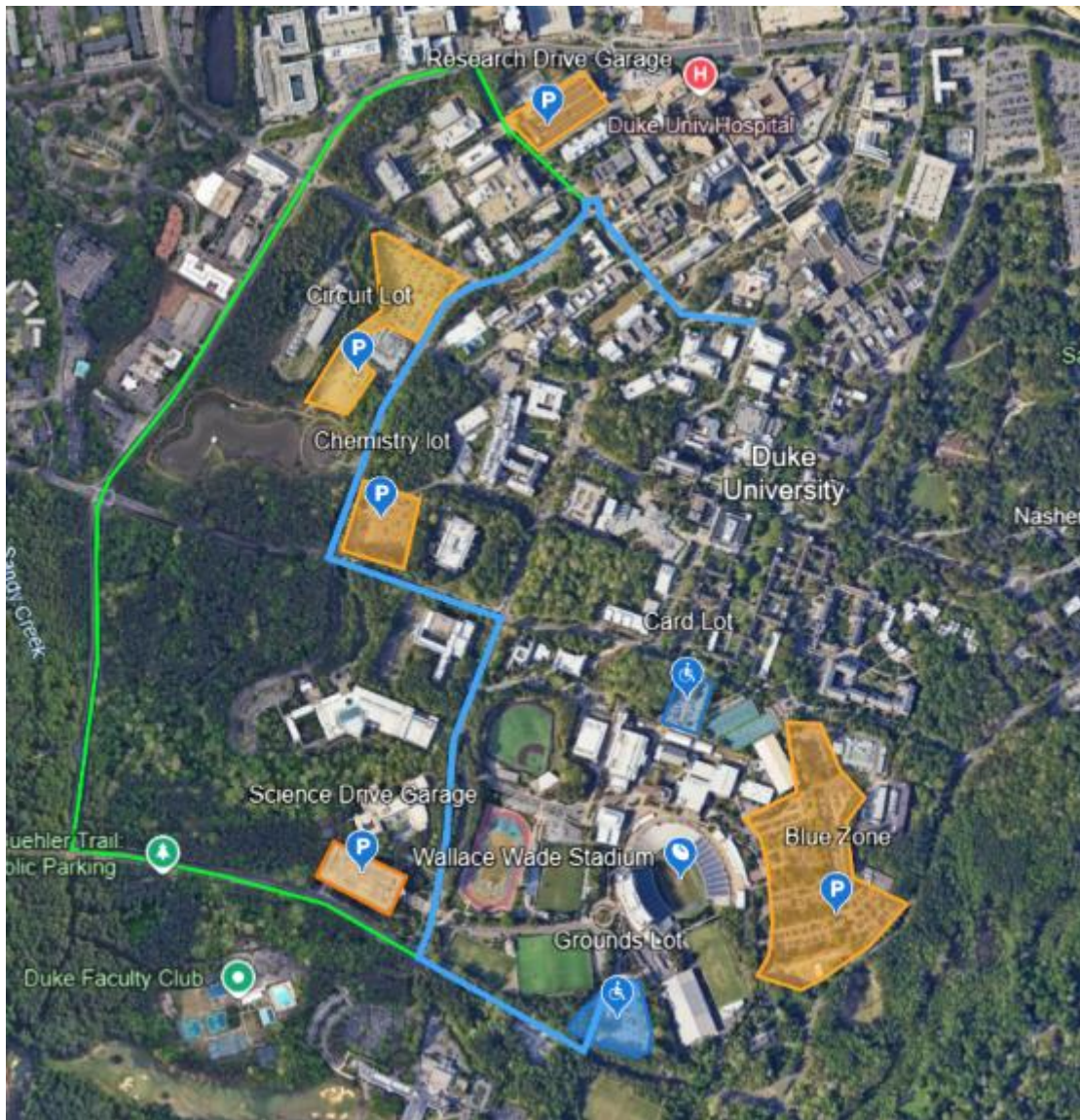
The Johnson Family Team Store is located outside the Bostock Gate next to the Duke Ticket Office. Guests who wish to visit the Johnson Family Team Store after entering the stadium should go to the Bostock Gate for assistance. All entry policies regarding bag and prohibited items restrictions apply to Duke Stores purchases on event day.

PARKING

The following locations will be available for general parking: Chemistry lot, Circuit lot, Research Drive Garage, Science Drive Garage and the Blue Zone. ADA Parking (placard required) will be available in: Card Gym Lot and Grounds Lot. Parking at all locations is available on a first come first serve basis. If a lot/garage is already at capacity you may be redirected to another location.

It is recommended if already parked on campus that you stay in your current parking space and utilize Duke Transit to and from the concert. Additional transportation services will be available via the C1, PR1 and Concert Express route servicing Research Drive Garage and Circuit Drive parking locations. Please visit www.parking.duke.edu for more information

Rideshare pick up and drop off will be located at Science Drive Visitors Lot located at 81 Science Drive



PERMITTED ITEMS

The following items are permitted to enter the stadium. Additional entry screening and inspection may be required – please follow the direction of entry staff.

- Binoculars (no cases larger than 8" x 5" x 1")
- Blankets
- Cameras (no cases larger than 8" x 5" x 1" & lens less than 4 inches)
- Clear Bags (12" x 12" x 6" or smaller)
- Coats
- Duke Stores merchandise bags (with receipt of day purchase)
- Rain Apparel
- Seat Cushions & Stadium Chairs
- Small Radios with Headphones
- Umbrellas (cannot be opened in seating areas)
- Wristlets/clutches that fit in the palm of the hand (smaller than 8" x 5" x 1")

PROHIBITED ITEMS

For the safety and experience of all guests, the following items are prohibited from entering the stadium.

- Alcoholic beverages
- Artificial noisemakers
- Bags exceeding 12" x 12" x 6" or that do not meet the Clear Bag Policy guidelines - #KnowBeforeYouGo
- Balloons, Balls and Frisbees
- Cameras w/lens over 4 inches
- Coolers and Containers (ice chests, thermoses, cups, bottles or other like containers)
- All Drones and Unmanned Aircraft Systems (UAS)
- Hazardous Materials
- Items obstructing sightlines of other guests
- Laser Pointers
- Outside chairs (lounge chairs, folding chairs, etc.)
- Outside food and beverage (exception: medical and childcare reasons)
- Pets (exception: service animals)
- Selfie Sticks
- Shoes with wheels (wheelies)
- Video Cameras
- Weapons of any kind (including pocket knives)

Duke University reserves the right to deny anyone or anything from entering the stadium. Items denied entry can be checked at the designated Item Check locations outside each stadium gate (excluding alcohol, hazardous materials, outside food & drinks, pets and weapons), returned to personal vehicles and/or discarded. The owner assumes all risk for items left at Item Check.

Bags/items are not permitted to be left unattended outside of Brooks Field at Wallace Wade Stadium. Unattended items found outside the stadium will be disposed of or dealt with in a manner deemed appropriate by stadium officials. Duke University and Duke Athletics are not responsible for the loss of any unattended items.

RESTROOMS

Prior to entering the stadium, portable restrooms are located in parking lots.

Inside the stadium, restrooms are located on the east and west concourses. All restrooms are accessible and have baby-changing stations. Gender-neutral accessible family restrooms are located behind Section 9, Section 18, Section 26 and on field level. An adult changing table is available in the gender-neutral accessible family restroom behind Section 18. In Blue Devil Tower, accessible restrooms, including a gender-neutral accessible family restroom, are located on each floor.

RE-ENTRY POLICY

Stadium re-entry is not permitted.

In the event of severe weather or other scenarios that require evacuation of the stadium, guests will be permitted re-entry with a valid ticket when the stadium re-opens.

SERVICE ANIMALS / SERVICE ANIMALS IN TRAINING

Duke University Athletics welcomes trained Service Animals to Brooks Field at Wallace Wade Stadium. A Service Animal is a dog that is individually trained to do work or perform tasks for the benefit of an individual with a disability, including a physical, sensory, psychiatric, intellectual or other mental disability. A Service Animal must be under the control of the handler at all times. A Service Animal must be leashed or tethered unless doing so would interfere with the task that it was trained to perform for the individual with a disability. A Service Animal must not show aggression toward people or other animals. A Service Animal does not bark, growl or whine unless trained to do so as a warning sign to the handler. A Service Animal does not solicit food or other items from the general public. A Service Animal's work does not disrupt the normal course of business. Service Animals should wear current rabies vaccination tags at all times or provide proof of vaccination upon request. If a Service Animal is found in violation of these guidelines, the Service Animal will be excluded from the facility.

In North Carolina, Service Animals in Training have the same access rights as people with disabilities using a Service Animal. The Service Animal in Training must wear a collar and leash, harness or cape that identifies it as a Service Animal in Training. Service Animals in Training should wear current rabies vaccination tags at all times or provide proof of vaccination upon request. The trainer is liable for any damage caused by the animal while on Duke University property. Service Animals in Training must be under the control of the handler at all times, must be housebroken, and must follow all behavior guidelines established for fully trained Service Animals. If the Service Animal in Training is found in violation of these guidelines, the Service Animal in Training will be excluded from the facility.

SMOKING

Duke University is a Tobacco-Free Campus. The policy prohibits the use of all tobacco-based products, including but not limited to cigarettes, cigars, cigarillos, chewing tobacco, snuff and electronic smoking devices (including e-cigarettes, vaping products and IQOS).

TICKETING

All guests must have tickets before coming to Brooks Field at Wallace Wade Stadium for the concert and show them at screening areas for access to the stadium. There will be no walkup tickets sold for this event.

Guests with Teal and Orange tickets are ONLY permitted to enter the stadium through the Bostock Gate and the Wilson Gate. Guests with Purple and Pink tickets are allowed entry through all entrances into the stadium (Powers Gate, Bostock Gate, and Wilson Gate). Guests with Gray and Blue tickets are allowed entry through Finch-Yeager Bridge.

UMBRELLAS

Umbrellas are permitted inside the stadium. For the courtesy and safety of all guests, umbrellas should not be raised in crowded seating areas.

WEATHER

All shows will go on rain or shine. However, in the event of severe weather we will keep our ticket holders updated via email as well as an announcement on Duke Today. An event may be delayed, postponed, or cancelled depending on the severity of the weather expected.

WHEELCHAIR ASSISTANCE

Wheelchair Assistance is available through Duke Game Day Guest Services from the ADA parking lots to seating locations. To request wheelchair assistance, speak to the nearest event staff or use DUACCESS Assistance Text Messaging by texting "DUACCESS", request and location to 919-808-5576. Wheelchairs are not available for game day rental or reservation.

WIFI INFORMATION

Complementary wi-fi is available on the "GoDuke" network.